

Hampshire Water Transfer and Water Recycling Project Environmental Statement - Figure 16.1 Proposed Development and Mineral Safeguarded Areas and Safeguarded Minerals and Waste Sites

VOLUME NUMBER: 6

PLANNING INSPECTORATE SCHEME NUMBER: WA010002

APPLICATION DOCUMENT REFERENCE: 6.3

APFP REGULATION: 5(2)(a)

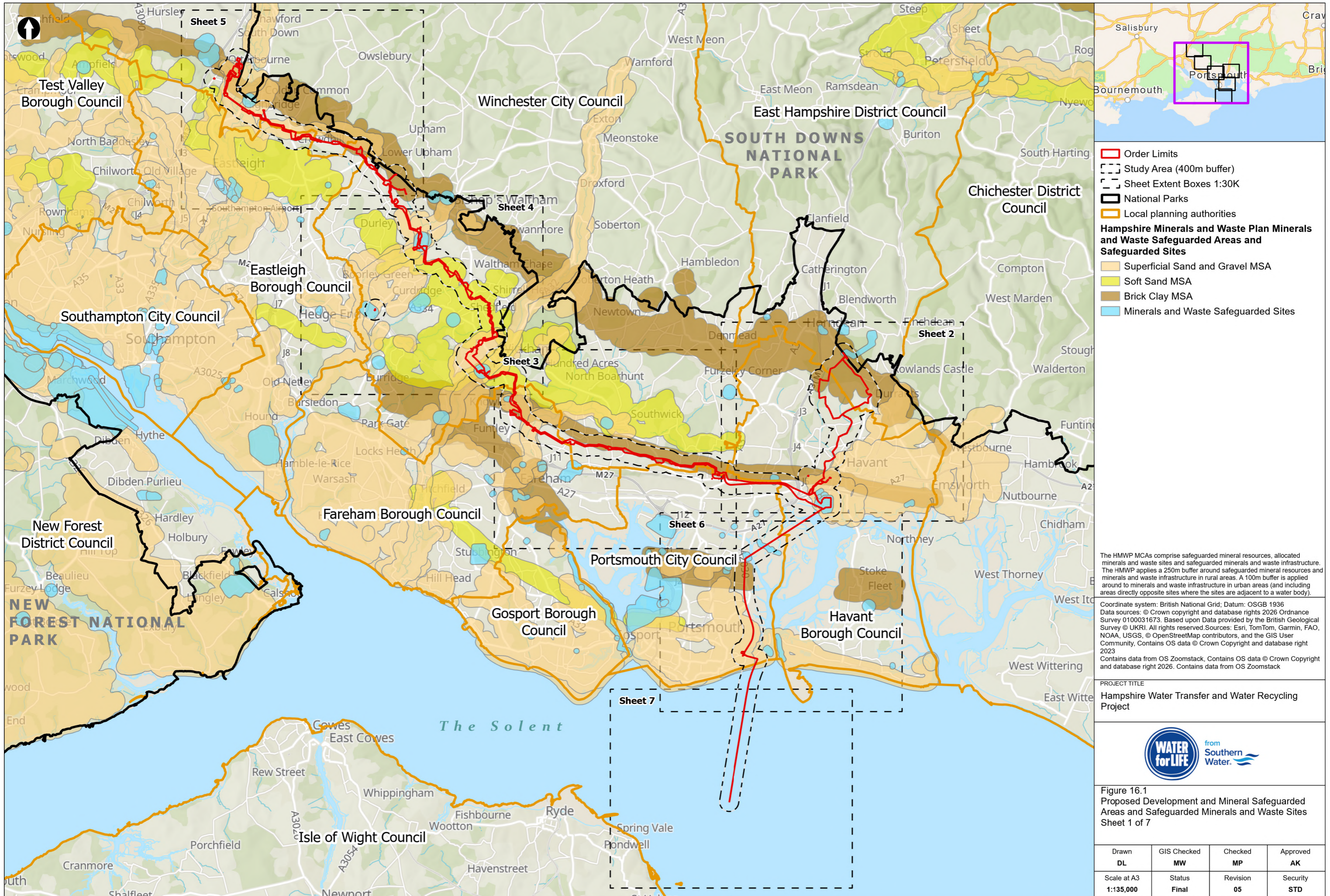
May 2026

Version 0



from
**Southern
Water** 

The Southern Water logo consists of the word 'Southern' stacked above the word 'Water'. To the right of 'Water' is a graphic element consisting of three stylized, wavy blue lines of varying lengths, suggesting water or waves. A registered trademark symbol (®) is positioned to the left of the wavy lines.



- Order Limits
 - Study Area (400m buffer)
 - Sheet Extent Boxes 1:30K
 - National Parks
 - Local planning authorities
- Hampshire Minerals and Waste Plan Minerals and Waste Safeguarded Areas and Safeguarded Sites**
- Superficial Sand and Gravel MSA
 - Soft Sand MSA
 - Brick Clay MSA
 - Minerals and Waste Safeguarded Sites

The HMWP MCAs comprise safeguarded mineral resources, allocated minerals and waste sites and safeguarded minerals and waste infrastructure. The HMWP applies a 250m buffer around safeguarded mineral resources and minerals and waste infrastructure in rural areas. A 100m buffer is applied around to minerals and waste infrastructure in urban areas (and including areas directly opposite sites where the sites are adjacent to a water body).

Coordinate system: British National Grid; Datum: OSGB 1936
 Data sources: © Crown copyright and database rights 2026 Ordnance Survey 0100031673. Based upon Data provided by the British Geological Survey © UKRI. All rights reserved. Sources: Esri, TomTom, Garmin, FAO, NOAA, USGS, © OpenStreetMap contributors, and the GIS User Community, Contains OS data © Crown Copyright and database right 2023
 Contains data from OS Zoomstack, Contains OS data © Crown Copyright and database right 2026. Contains data from OS Zoomstack

PROJECT TITLE
 Hampshire Water Transfer and Water Recycling Project

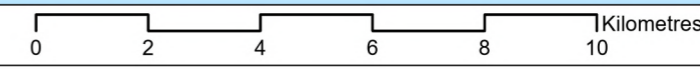


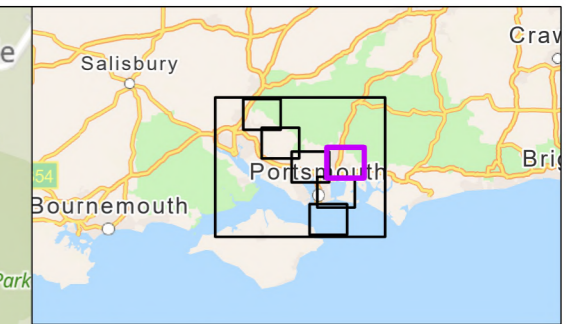
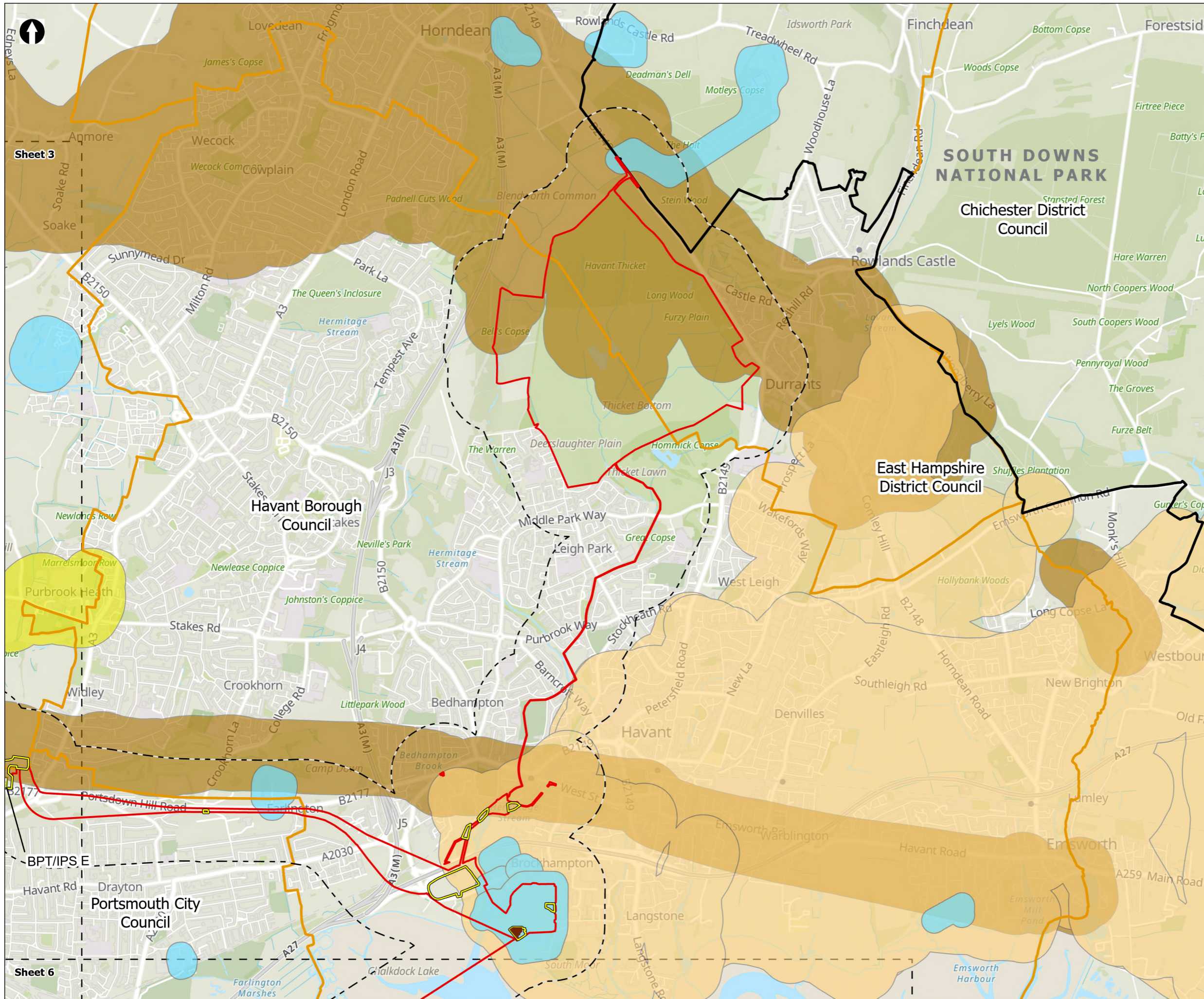
Figure 16.1
 Proposed Development and Mineral Safeguarded Areas and Safeguarded Minerals and Waste Sites
 Sheet 1 of 7

Drawn DL	GIS Checked MW	Checked MP	Approved AK
Scale at A3 1:135,000	Status Final	Revision 05	Security STD

Drawing Number
PC5223-RHD-ES-ZZ-D-Z-0015

© Southern Water 2026
 This document is issued for the party which commissioned it and for specific purposes connected with the captioned project only. It should not be relied upon by any other party or used for any other purpose. We accept no responsibility for the consequences of this document being relied upon by any other party, or being used for any other purpose, or containing any error or omission which is due to an error or omission in data supplied to us by other parties.





- Order Limits
 - Study Area (400m buffer)
 - Sheet Extent Boxes 1:30K
 - National Parks
 - Local planning authorities
 - Construction compounds
 - Limits of Deviation for Budds Farm Pumping Station
- Hampshire Minerals and Waste Plan Minerals and Waste Safeguarded Areas and Safeguarded Sites**
- Superficial Sand and Gravel MSA
 - Soft Sand MSA
 - Brick Clay MSA
 - Minerals and Waste Safeguarded Sites
- Above Ground Plant**
- Break Pressure Tank & Intermediate Pumping Station

The HMWP MCAs comprise safeguarded mineral resources, allocated minerals and waste sites and safeguarded minerals and waste infrastructure. The HMWP applies a 250m buffer around safeguarded mineral resources and minerals and waste infrastructure in rural areas. A 100m buffer is applied around to minerals and waste infrastructure in urban areas (and including areas directly opposite sites where the sites are adjacent to a water body).

Coordinate system: British National Grid; Datum: OSGB 1936
 Data sources: © Crown copyright and database rights 2026 Ordnance Survey 0100031673. Based upon Data provided by the British Geological Survey © UKRI. All rights reserved. Sources: Esri, TomTom, Garmin, FAO, NOAA, USGS, © OpenStreetMap contributors, and the GIS User Community, Contains OS data © Crown Copyright and database right 2023
 Contains data from OS Zoomstack, Contains OS data © Crown Copyright and database right 2026. Contains data from OS Zoomstack

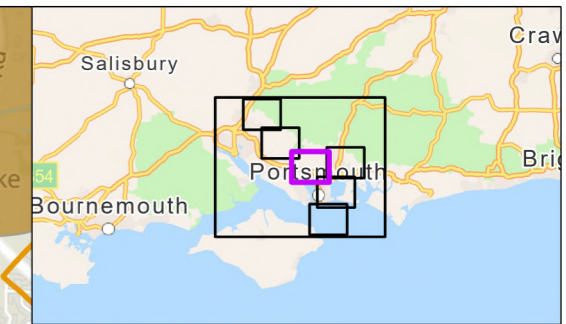
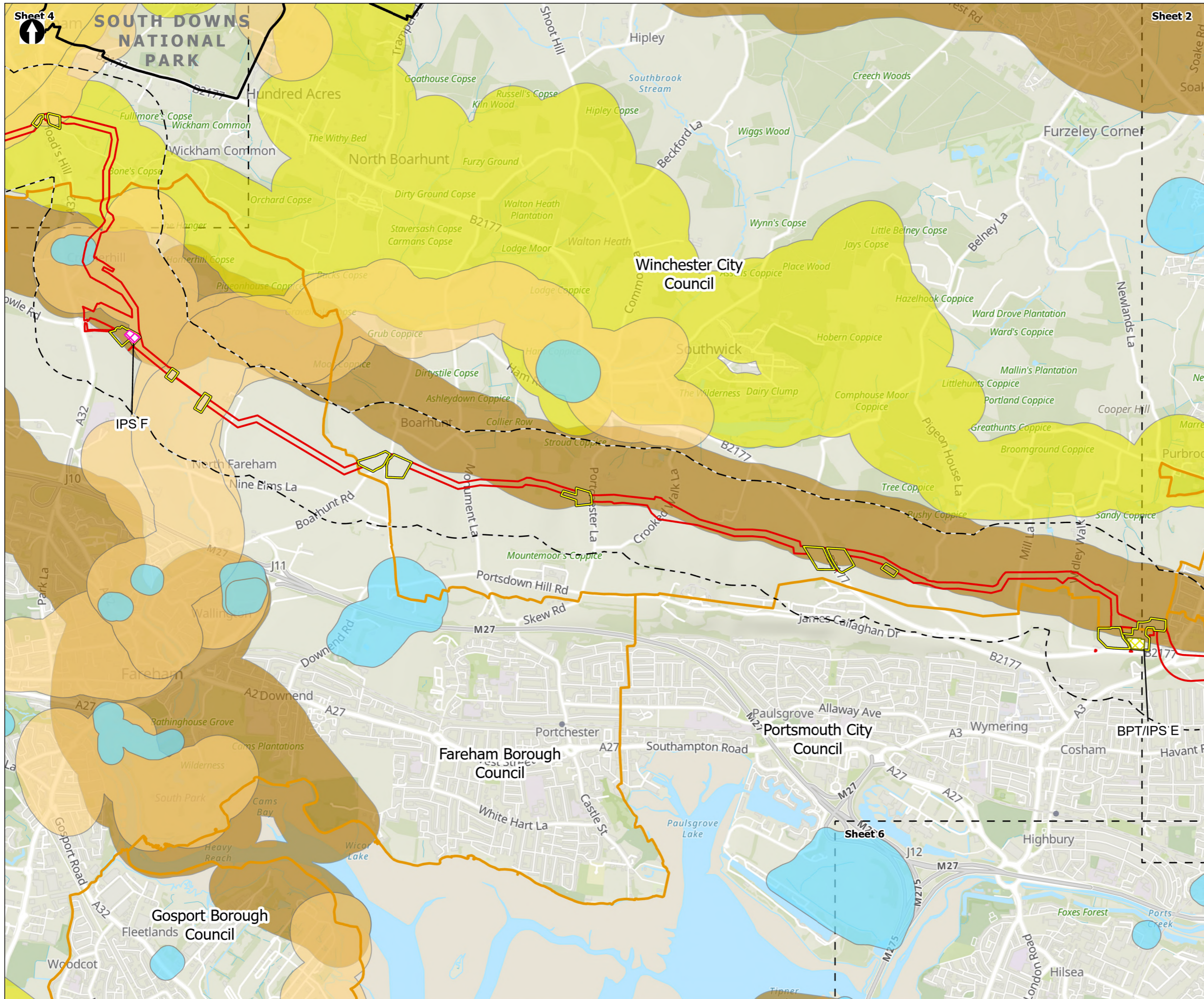
PROJECT TITLE
Hampshire Water Transfer and Water Recycling Project



Figure 16.1
 Proposed Development and Mineral Safeguarded Areas and Safeguarded Minerals and Waste Sites
 Sheet 2 of 7

Drawn DL	GIS Checked MW	Checked MP	Approved AK
Scale at A3 1:30,000	Status Final	Revision 05	Security STD





- Order Limits
- Study Area (400m buffer)
- Sheet Extent Boxes 1:30K
- National Parks
- Local planning authorities
- Construction compounds
- Hampshire Minerals and Waste Plan Minerals and Waste Safeguarded Areas and Safeguarded Sites**
- Superficial Sand and Gravel MSA
- Soft Sand MSA
- Brick Clay MSA
- Minerals and Waste Safeguarded Sites
- Above Ground Plant**
- Break Pressure Tank & Intermediate Pumping Station
- Intermediate Pumping Station

The HMWP MCAs comprise safeguarded mineral resources, allocated minerals and waste sites and safeguarded minerals and waste infrastructure. The HMWP applies a 250m buffer around safeguarded mineral resources and minerals and waste infrastructure in rural areas. A 100m buffer is applied around to minerals and waste infrastructure in urban areas (and including areas directly opposite sites where the sites are adjacent to a water body).

Coordinate system: British National Grid; Datum: OSGB 1936
 Data sources: © Crown copyright and database rights 2026 Ordnance Survey 0100031673. Based upon Data provided by the British Geological Survey © UKRI. All rights reserved. Sources: Esri, TomTom, Garmin, FAO, NOAA, USGS, © OpenStreetMap contributors, and the GIS User Community, Contains OS data © Crown Copyright and database right 2023
 Contains data from OS Zoomstack, Contains OS data © Crown Copyright and database right 2026. Contains data from OS Zoomstack

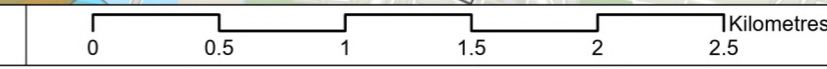
PROJECT TITLE
Hampshire Water Transfer and Water Recycling Project

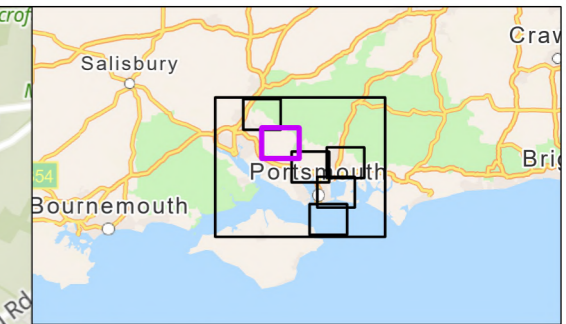
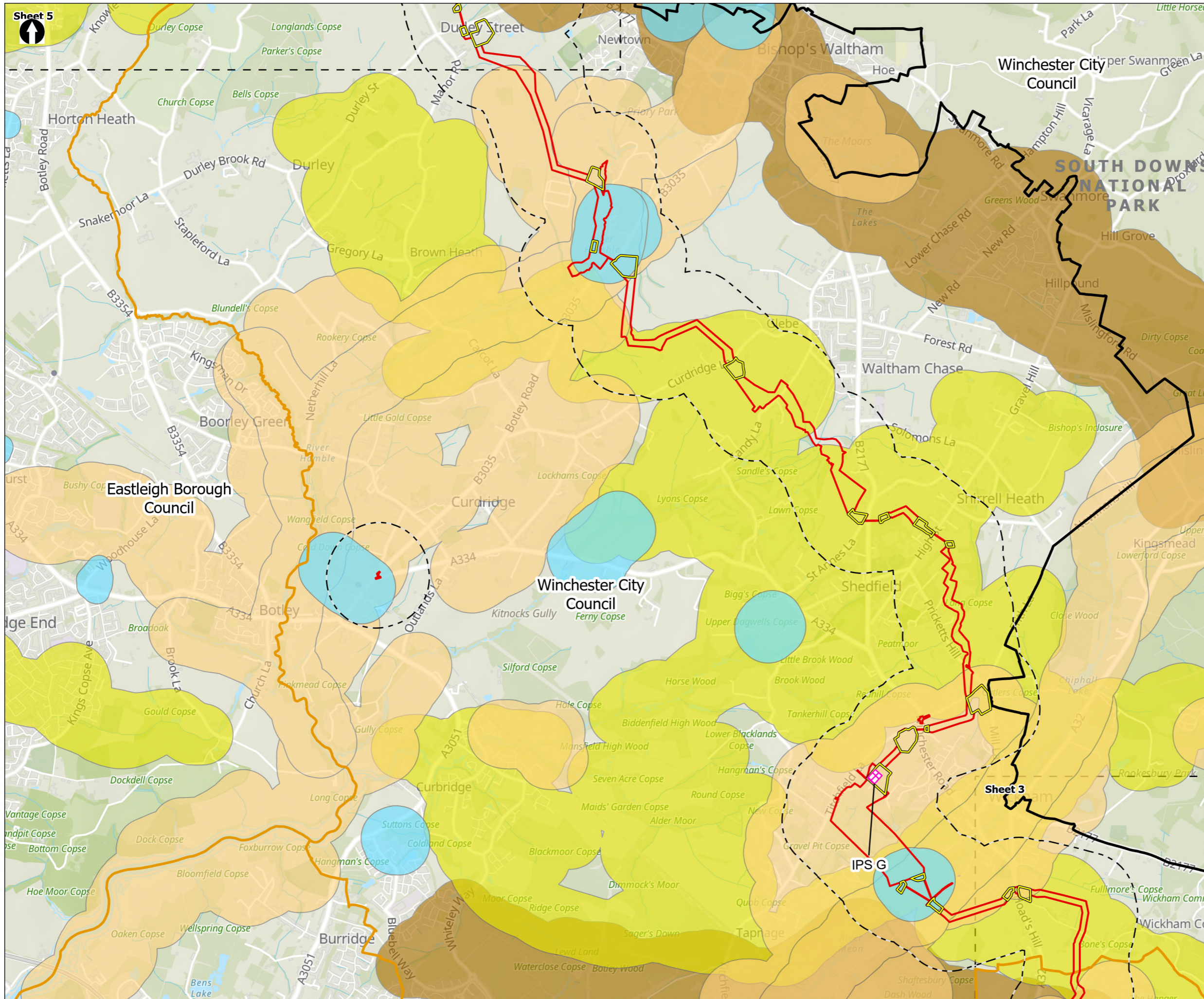


Figure 16.1
 Proposed Development and Mineral Safeguarded Areas and Safeguarded Minerals and Waste Sites
 Sheet 3 of 7

Drawn DL	GIS Checked MW	Checked MP	Approved AK
Scale at A3 1:30,000	Status Final	Revision 05	Security STD

Drawing Number
PC5223-RHD-ES-ZZ-D-Z-0015





- Order Limits
 - Study Area (400m buffer)
 - Sheet Extent Boxes 1:30K
 - National Parks
 - Local planning authorities
 - Construction compounds
- Hampshire Minerals and Waste Plan Minerals and Waste Safeguarded Areas and Safeguarded Sites**
- Superficial Sand and Gravel MSA
 - Soft Sand MSA
 - Brick Clay MSA
 - Minerals and Waste Safeguarded Sites
- Above Ground Plant**
- Intermediate Pumping Station

The HMWP MCAs comprise safeguarded mineral resources, allocated minerals and waste sites and safeguarded minerals and waste infrastructure. The HMWP applies a 250m buffer around safeguarded mineral resources and minerals and waste infrastructure in rural areas. A 100m buffer is applied around to minerals and waste infrastructure in urban areas (and including areas directly opposite sites where the sites are adjacent to a water body).

Coordinate system: British National Grid; Datum: OSGB 1936
 Data sources: © Crown copyright and database rights 2026 Ordnance Survey 0100031673. Based upon Data provided by the British Geological Survey © UKRI. All rights reserved. Sources: Esri, TomTom, Garmin, FAO, NOAA, USGS, © OpenStreetMap contributors, and the GIS User Community, Contains OS data © Crown Copyright and database right 2023
 Contains data from OS Zoomstack, Contains OS data © Crown Copyright and database right 2026. Contains data from OS Zoomstack

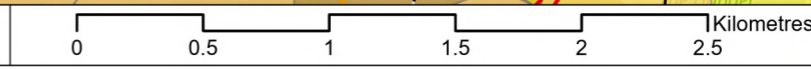
PROJECT TITLE
Hampshire Water Transfer and Water Recycling Project

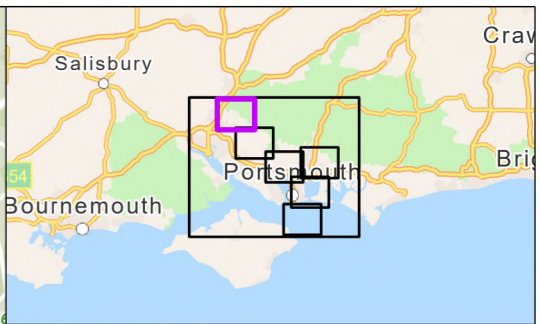
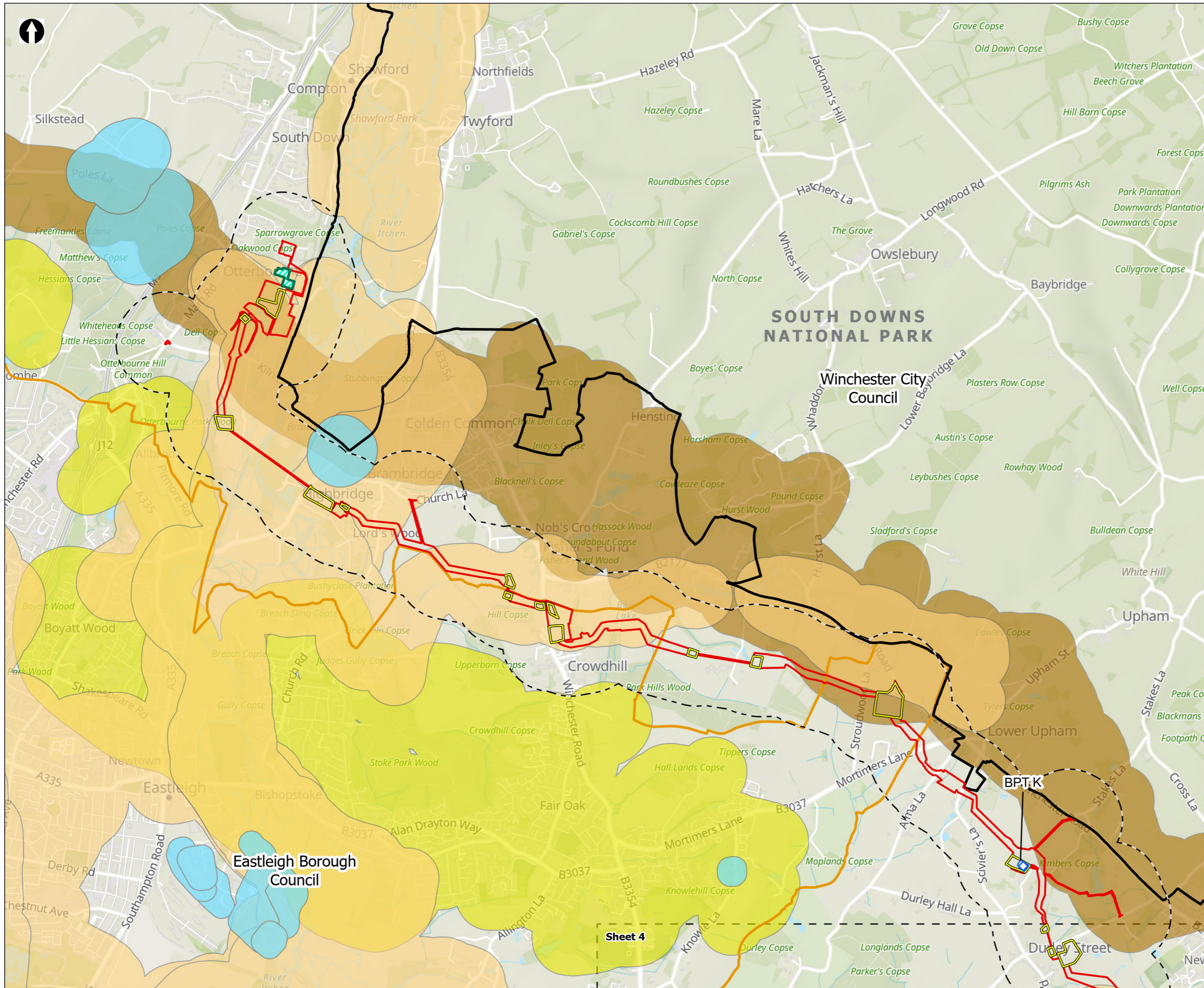


Figure 16.1
 Proposed Development and Mineral Safeguarded Areas and Safeguarded Minerals and Waste Sites
 Sheet 4 of 7

Drawn DL	GIS Checked MW	Checked MP	Approved AK
Scale at A3 1:30,000	Status Final	Revision 05	Security STD

Drawing Number **PC5223-RHD-ES-ZZ-D-Z-0015**





- Order Limits
 - Study Area (400m buffer)
 - Sheet Extent Boxes 1:30K
 - National Parks
 - Local planning authorities
 - Construction compounds
 - Limits of Deviation for Otterbourne INNS Treatment Plant
- Hampshire Minerals and Waste Plan Minerals and Waste Safeguarded Areas and Safeguarded Sites**
- Superficial Sand and Gravel MSA
 - Soft Sand MSA
 - Brick Clay MSA
 - Minerals and Waste Safeguarded Sites
- Above Ground Plant**
- Break Pressure Tank

The HMWP MCAs comprise safeguarded mineral resources, allocated minerals and waste sites and safeguarded minerals and waste infrastructure. The HMWP applies a 250m buffer around safeguarded mineral resources and minerals and waste infrastructure in rural areas. A 100m buffer is applied around to minerals and waste infrastructure in urban areas (and including areas directly opposite sites where the sites are adjacent to a water body).

Coordinate system: British National Grid; Datum: OSGB 1936
 Data sources: © Crown copyright and database rights 2026 Ordnance Survey 0100031673. Based upon Data provided by the British Geological Survey © UKRI. All rights reserved. Sources: Esri, TomTom, Garmin, FAO, NOAA, USGS, © OpenStreetMap contributors, and the GIS User Community, Contains OS data © Crown Copyright and database right 2023
 Contains data from OS Zoomstack, Contains OS data © Crown Copyright and database right 2026. Contains data from OS Zoomstack

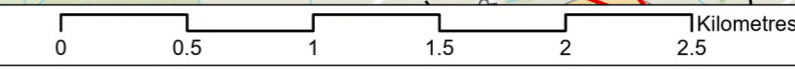
PROJECT TITLE
Hampshire Water Transfer and Water Recycling Project



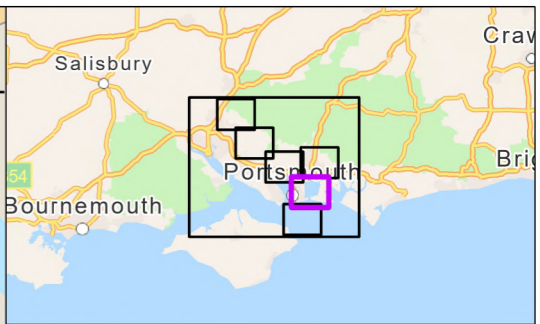
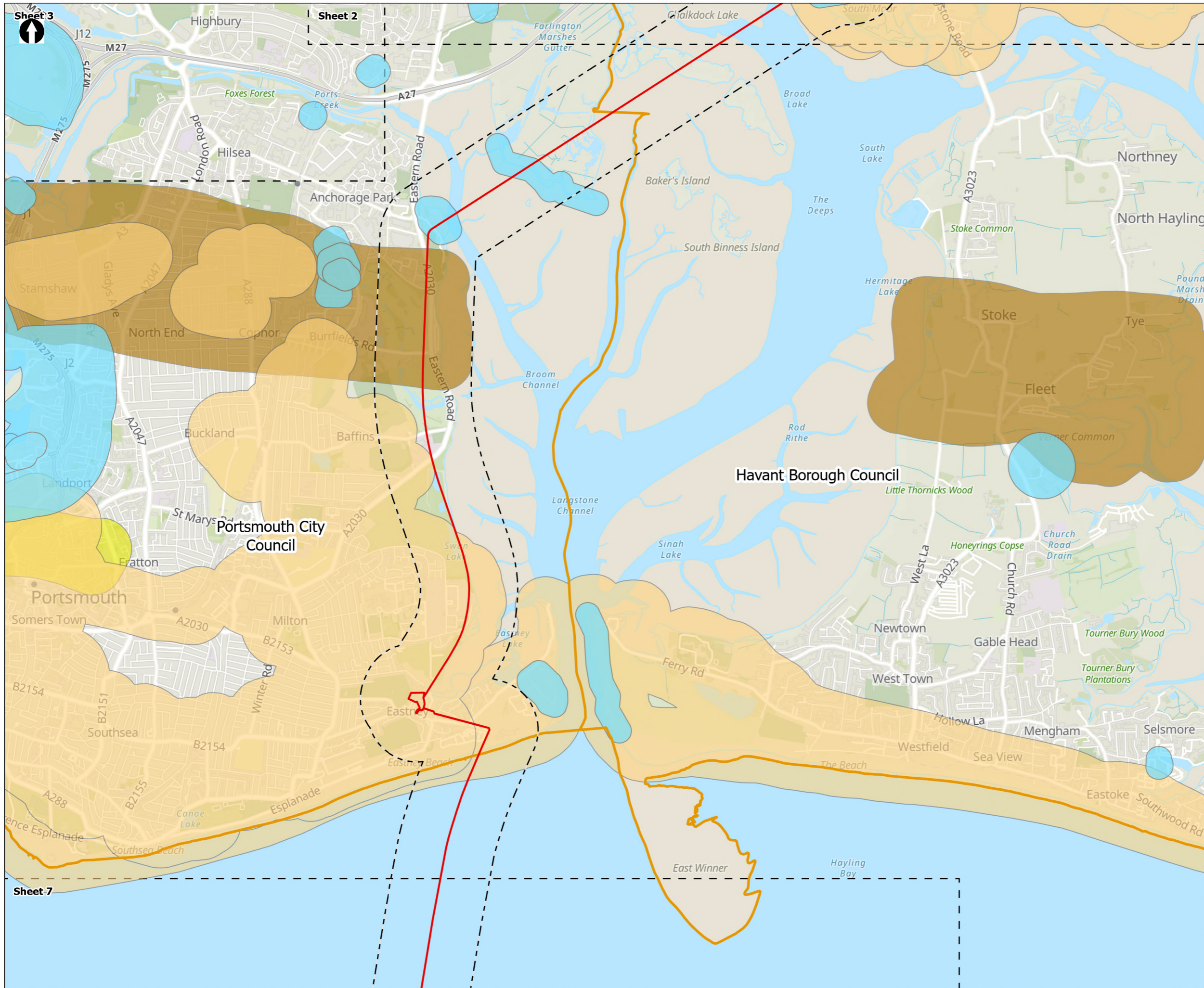
Figure 16.1
 Proposed Development and Mineral Safeguarded Areas and Safeguarded Minerals and Waste Sites
 Sheet 5 of 7

Drawn DL	GIS Checked MW	Checked MP	Approved AK
Scale at A3 1:30,000	Status Final	Revision 05	Security STD

Drawing Number
PC5223-RHD-ES-ZZ-D-Z-0015



Sheet 4



- Order Limits
 - Study Area (400m buffer)
 - Sheet Extent Boxes 1:30K
 - Local planning authorities
- Hampshire Minerals and Waste Plan Minerals and Waste Safeguarded Areas and Safeguarded Sites**
- Superficial Sand and Gravel MSA
 - Soft Sand MSA
 - Brick Clay MSA
 - Minerals and Waste Safeguarded Sites

The HMWP MCAs comprise safeguarded mineral resources, allocated minerals and waste sites and safeguarded minerals and waste infrastructure. The HMWP applies a 250m buffer around safeguarded mineral resources and minerals and waste infrastructure in rural areas. A 100m buffer is applied around to minerals and waste infrastructure in urban areas (and including areas directly opposite sites where the sites are adjacent to a water body).

Coordinate system: British National Grid; Datum: OSGB 1936
 Data sources: © Crown copyright and database rights 2026 Ordnance Survey 0100031673. Based upon Data provided by the British Geological Survey © UKRI. All rights reserved. Sources: Esri, TomTom, Garmin, FAO, NOAA, USGS, © OpenStreetMap contributors, and the GIS User Community, Contains OS data © Crown Copyright and database right 2023
 Contains data from OS Zoomstack, Contains OS data © Crown Copyright and database right 2026. Contains data from OS Zoomstack

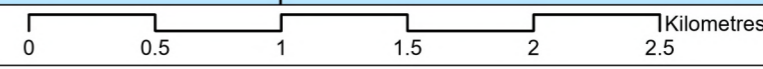
PROJECT TITLE
Hampshire Water Transfer and Water Recycling Project

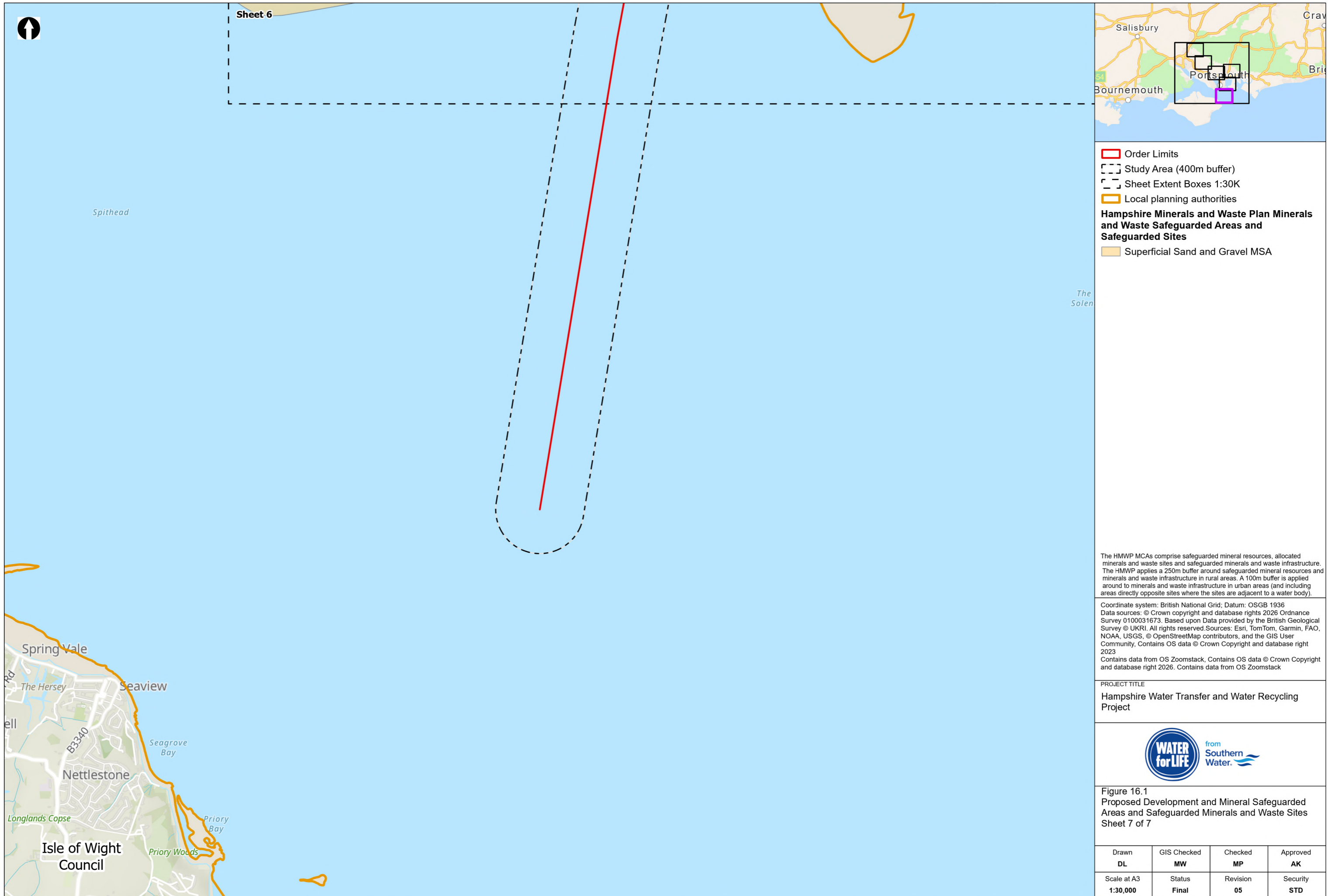


Figure 16.1
 Proposed Development and Mineral Safeguarded Areas and Safeguarded Minerals and Waste Sites
 Sheet 6 of 7

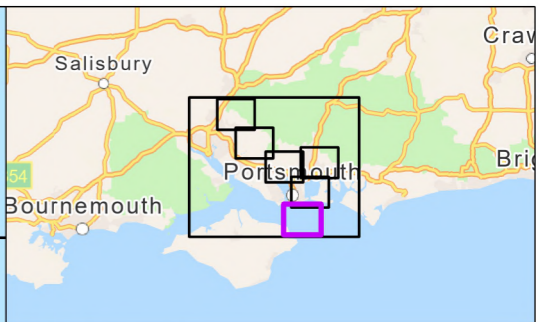
Drawn DL	GIS Checked MW	Checked MP	Approved AK
Scale at A3 1:30,000	Status Final	Revision 05	Security STD

Drawing Number
PC5223-RHD-ES-ZZ-D-Z-0015





Sheet 6



- Order Limits
- Study Area (400m buffer)
- Sheet Extent Boxes 1:30K
- Local planning authorities
- Hampshire Minerals and Waste Plan Minerals and Waste Safeguarded Areas and Safeguarded Sites
- Superficial Sand and Gravel MSA

The HMWP MCAs comprise safeguarded mineral resources, allocated minerals and waste sites and safeguarded minerals and waste infrastructure. The HMWP applies a 250m buffer around safeguarded mineral resources and minerals and waste infrastructure in rural areas. A 100m buffer is applied around to minerals and waste infrastructure in urban areas (and including areas directly opposite sites where the sites are adjacent to a water body).

Coordinate system: British National Grid; Datum: OSGB 1936
 Data sources: © Crown copyright and database rights 2026 Ordnance Survey 0100031673. Based upon Data provided by the British Geological Survey © UKRI. All rights reserved. Sources: Esri, TomTom, Garmin, FAO, NOAA, USGS, © OpenStreetMap contributors, and the GIS User Community, Contains OS data © Crown Copyright and database right 2023
 Contains data from OS Zoomstack, Contains OS data © Crown Copyright and database right 2026. Contains data from OS Zoomstack

PROJECT TITLE
Hampshire Water Transfer and Water Recycling Project



Figure 16.1
 Proposed Development and Mineral Safeguarded Areas and Safeguarded Minerals and Waste Sites
 Sheet 7 of 7

Drawn DL	GIS Checked MW	Checked MP	Approved AK
Scale at A3 1:30,000	Status Final	Revision 05	Security STD

